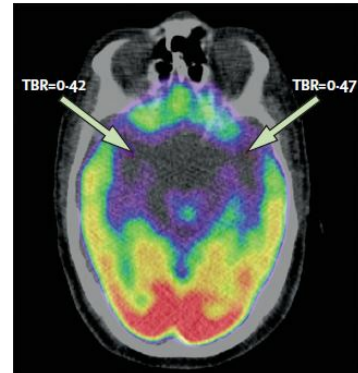


Clinical Insights.

Understanding the link between stress and cardiovascular events.

Emotional stress has been linked to increased risk of cardiovascular disease. Could the amygdala, a brain region involved in stress, help researchers predict risk of future cardiovascular events?

[Click here](#) to discover the relation between resting amygdalar activity and cardiovascular events.



Upcoming Events.



[Click the image to learn more.](#)

Next month, join us at A4M in Florida!

- Get an [exclusive discount](#) on your conference registration, courtesy of Evoke
- Stop by Evoke booth #106 to learn what's new at Evoke!

[Register now!](#)



Click the image to learn more.

Also next month, join us at Regional Osteopathic Convention in New York!

- Hear Evoke co-founders Drs. David and Nicole Hagedorn speak on medical neuroscience protocols for neuroinflammation
- Stop by our booth to learn what's new at Evoke!

[Register now!](#)

Product Updates & Education.

Best Practice Reminder: Have you been performing Verification of Benefits?



Physicians can use a Verification of Benefits form to confirm if patients have coverage for specific services and to estimate how much insurance will pay for these services.

This sample [Verification of Benefits](#) form makes it easy.

Questions about billing or reimbursement?

Email Evoke's account manager, [Susan Burkett](#), to address your billing inquiries.

About the eVox System

The eVox system enables physicians to objectively measure and optimally manage the growing population of patients with memory loss, cognitive impairment, and other

stress-related conditions.

To learn more visit evokeneuroscience.com



BRAIN

FEEDBACK

Help Patients Attain Healthier Brain Function.

