

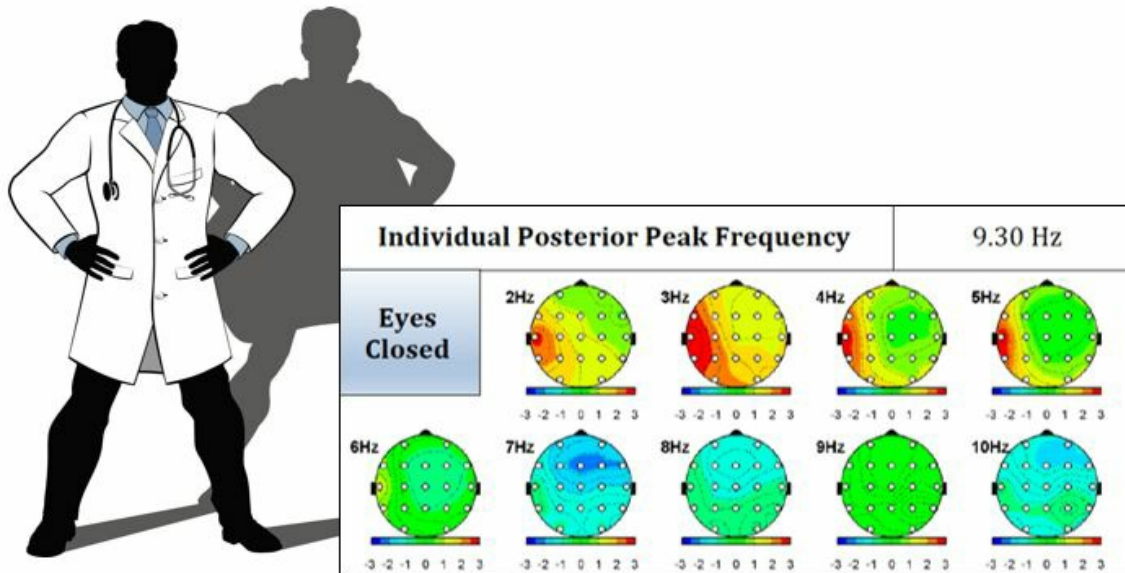
## Clinical Insights.

### Super Doctor + Dedicated Patient = Superior Clinical Outcomes

Managing complex cognitive disorders is no easy feat. But when you pair advanced technology and a dedicated patient together with an Evoke Super Doctor, extraordinary outcomes are possible.

Longtime Evoke physician and IFM faculty [Dr. Thomas Sult](#) is known for treating *people*, not just symptoms. So when he recognized signs of cognitive impairment and emotional irritability in his 76 year old female patient, he wanted to target the source of the problem.

### Could it be anxiety, Alzheimer's, depression, hypothyroidism?



He knew the eVox cognitive assessment procedures would help with his differential diagnosis.

The eVox Report came with good news: a healthy **peak alpha frequency** suggested the problem wasn't overall mental decline. But head maps showed the **left temporal lobe** had high power in slow frequencies. Further probing revealed this was the site of a lesion from brain cancer 30 years prior. Lastly, the **frontal lobe** showed low power in slow frequencies. This could explain the patient's emotional impulsivity, and hinted depression might be at play.

Dr. Sult knew **neurofeedback training** would be an ideal treatment option. The goal: decrease temporal power and increase frontal power. Ten sessions later, the patient already noticed an improvement. After the full course of treatment, symptoms of cognitive impairment and emotional irritability were significantly resolved. This dedicated patient credits Dr. Sult and neurofeedback training for saving her marriage!

### Super Doctor: 1, Brain imbalance: 0.

Do you want to be our next featured Super Doctor? [Email us](#) to set up a 15 minute patient success story review.

## Chronic pain lives in the brain.



When your patients think about chronic pain, chances are they think of an afflicted body part: an aching lower back, unbearably stiff finger joints, or a throbbing shoulder.

But you know that to effectively treat chronic pain, it is important to look at the **brain** in addition to the body.

[Share this article](#) with patients to help them understand how pain lives in the brain.

## Upcoming Events.

**This June, join us at IFM in Los Angeles!**

Institute for Functional Medicine's  
2017 Annual International Conference

**The Dynamic Brain:**  
Revealing the Potential of Neuroplasticity  
to Reverse neurodegeneration

**June 1-3, 2017**  
JW Marriott Los Angeles LA LIVE | Los Angeles, CA

[Click the image to learn more.](#)

**Evoke is taking the stage at IFM!**

Don't miss our Product & Tech Innovation Demo  
Thursday, June 1, at 10:05 AM

We will demo the eVox System and unveil a **BRAND NEW REPORT**  
that makes differential diagnosis of dementia and depression easier than ever.

## Product Updates & Education.

## 'Check Your Head' screener gets an update.



Check your head!

Evoke has made an update to the 'Check Your Head' patient screener. Now better than ever, the screener includes qualifying questions for visual and auditory evoked potentials.

It will help you know which patients might qualify for an eVox cognitive assessment and facilitate the reimbursement process.

View the new version [here](#).

Call [917-261-6096](tel:917-261-6096) to request the new Check

Your Head patient screener.

---

## Opportunity awaits!

### Participate in the Evoke Physician Referral Program.



Referring is easy. Simply introduce us to your colleagues by phone, email, or in person at the upcoming IFM June conference.

For every physician that purchases the eVox System, you get \$500.

Offer valid through July 1, 2017. Questions? Email [Elsie Ginsberg](mailto:Elsie.Ginsberg).

---

### About the eVox System

The eVox system enables physicians to objectively measure and optimally manage the growing population of patients with memory loss, cognitive impairment, and other stress-related conditions.

To learn more visit [evokeneuroscience.com](http://evokeneuroscience.com)



**BRAIN**

**FEEDBACK**

Help Patients Attain Healthier Brain Function.



